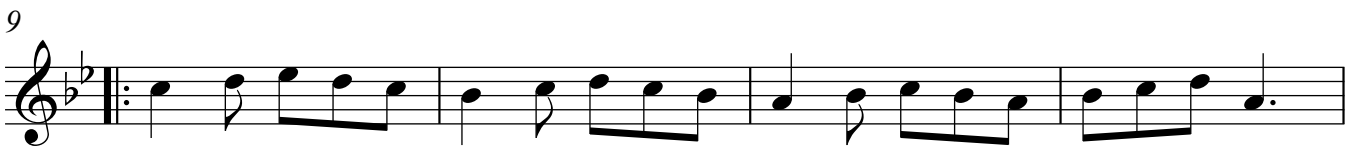


The Lockdown Halsway Bar Session No.8

Hyde and Seek



The Japnica Jig



Elsy's Waltz

1

5

10

14

1. 2.

1. 2.

Detailed description: This block contains the musical score for 'Elsy's Waltz'. It consists of four staves of music in treble clef, key of D major (one sharp), and 3/4 time. The first staff starts with a first ending bracket over the final two measures. The second staff has a first ending bracket over the final two measures and a second ending bracket over the final two measures. The third staff has a first ending bracket over the final two measures and a second ending bracket over the final two measures. The fourth staff has a first ending bracket over the final two measures and a second ending bracket over the final two measures. The piece concludes with a double bar line.

Piggelunskottisen

Vicki Swan

1

5

9

13

Detailed description: This block contains the musical score for 'Piggelunskottisen'. It consists of four staves of music in treble clef, key of D major (one sharp), and 4/4 time. The first staff starts with a first ending bracket over the final two measures. The second staff has a first ending bracket over the final two measures and a second ending bracket over the final two measures. The third staff has a first ending bracket over the final two measures and a second ending bracket over the final two measures. The fourth staff has a first ending bracket over the final two measures and a second ending bracket over the final two measures. The piece concludes with a double bar line.

Ankapoo

1



5



9



13



The first piece, 'Ankapoo', is written in 4/4 time and consists of 16 measures. It begins with a treble clef and a key signature of one flat (Bb). The melody is composed of eighth and quarter notes, with some beamed eighth notes. The piece concludes with a double bar line and repeat dots.

Tongue in Cheek

1



5



10



14



16



The second piece, 'Tongue in Cheek', is written in 4/4 time and consists of 19 measures. It begins with a treble clef and a key signature of two flats (Bb, Eb). The melody features eighth and quarter notes, with some beamed eighth notes. The piece includes first and second endings, indicated by '1.' and '2.' above the staff. The first ending leads back to an earlier part of the piece, while the second ending concludes the piece with a double bar line and repeat dots.

32 bar reel

Dancing Out

Vicki Swan

1 G Em C G Am D

5 G Em Am C D C/D G

9 C G D C G D G

13 C G D Am C/D G

32 bar reel

One for His Nob

Vicki Swan

1 D D A

5 D

9 D Am⁷ D Am⁷ D Am⁷ D

13 D Am⁷ D Am⁷ D Am⁷ D