

## Hands Across the Pond

Jonny Dyer

1 G C Am D G

6 Am Em D G Am C

12 D C G C D G

17 Gm Eb Cm F D7 Gm

23 C Am7 D Gm Eb Cm F

29 D D/F# Gm Cm6 D+ Gm Cm F

35 F7 Bb Gm E° C#° D

41 Cm F D7(b9) Gm

45 Cm Gm Cm/A D Gm

Paul's Ride by Louis Vosteen  
Tune: The Road to Boston

1 G C D G

5 G C D G

9 G C Am D

13 G C D G

26/11/24 Symmetry

## NEW TWO

Musical score for 'NEW TWO' in 4/4 time, consisting of four staves. The first staff begins with a treble clef, a 4/4 time signature, and a repeat sign. The melody consists of quarter and eighth notes, with some beamed eighth notes. The second staff continues the melody. The third and fourth staves also continue the melody, with the fourth staff ending with a repeat sign.

## NEW THREE

Musical score for 'NEW THREE' in 4/4 time, consisting of four staves. The first staff begins with a treble clef, a 4/4 time signature, and a repeat sign. The melody consists of quarter and eighth notes. The second staff continues the melody and includes a first ending bracket labeled '1.' and a second ending bracket labeled '2.'. The third and fourth staves continue the melody, with the fourth staff ending with a repeat sign and including a first ending bracket labeled '1.' and a second ending bracket labeled '2.'.

HATTIE

Belle of Amherst  
 Music Sophia by Erasmus Widmann 1631

0 D Cm/E $\flat$  D B $\flat$  F

4 Gm Dm C A | 1. D | 2. D

8 B $\flat$  C F B $\flat$  A

12 Gm D C Dm C D Gm

16 B $\flat$  C F Gm Dm A(add4) | 1. D | 2. D

Symmetry 29 June 21

On St Swithun's Day by Neil Stuart  
Tune: Denise Bearon

1 Gm Dm A<sup>7</sup> Dm Gm A

5 Dm Gm A Dm A Dm A

9 Dm Gm Dm Dm F Gm A

13 Gm Dm C Bb A Gm F A Dm

26/11/24 Symmetry

## HATTIE

Delia or The Amorous Godess  
Dance Ellen Taylor, Tune Samuel Howard 18th Cent

0 G D Em Am D(add4) G C Em Am G D

5 G D Em Am G D G C Am G/D D G

9 D G D Em A<sup>7</sup> D D G D A<sup>7</sup> D A

13 D G<sub>3</sub> D Em A<sup>7</sup> D D G D A<sup>7</sup> D

17 G D Em Am G D G C Em Am G D

21 G D Em Am G D G C Am G D G

1 Dm Bb

5 F Gm Am7 Am

9 Dm F

13 Am C7 Dm Am

Ambient variation 3

17

21

25

29

Ambient variation 1

33



37



41



45



Ambient variation 2

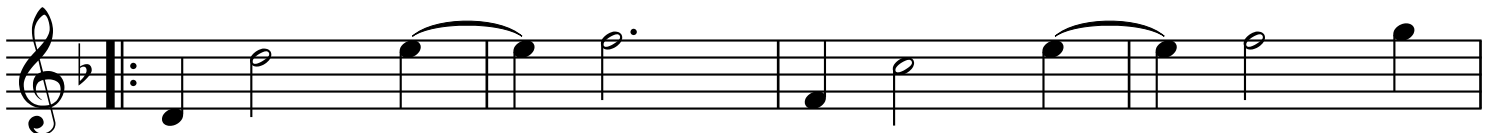
49



53



57



61



Nottingham April 21



## The Broken Drone

C 1 D G G/B C D Em C

The first line of music is in treble clef with a key signature of one sharp (F#) and a 3/4 time signature. It begins with a C major chord, followed by a first ending bracket over a D major chord. The melody consists of eighth and quarter notes, including a dotted quarter note. The line ends with an Em chord and a C major chord.

5 D G G/B C D 1. G 2. G

The second line of music continues the melody from the first line. It features a D major chord, followed by G and G/B chords. A first ending bracket covers two measures of G major chords, labeled '1. G' and '2. G'. The line concludes with a repeat sign and a final D major chord.

10 C G D G G/B C D

The third line of music starts with a C major chord, followed by G and D chords. The melody continues with eighth and quarter notes. It concludes with G and G/B chords, followed by C and D chords.

14 G G/B C D 1. G 2. G

The fourth line of music begins with a G major chord, followed by G/B, C, and D chords. A first ending bracket covers two measures of G major chords, labeled '1. G' and '2. G'. The line ends with a repeat sign and a final G major chord.