

Hands Across the Pond

Jonny Dyer

G C Am D G
 6 Am Em D G Am C
 12 D C G C D G
 17 Gm Eb Cm F D⁷ Gm
 23 C Am⁷ D Gm Eb Cm F
 29 D D/F[#] Gm Cm⁶ D⁺ Gm Cm F
 35 F⁷ B^b Gm E^o C^{#o} D
 41 Cm F D^{7(b9)} Gm
 45 Cm Gm Cm/A D Gm

One for His Nob

Chords: D D A

Chords: D

Chords: D Am⁷ D Am⁷ D Am⁷ D

Chords: D Am⁷ D Am⁷ D Am⁷ D

Dancing Out

Chords: G Em C G Am D

Chords: G Em Am C D C/D G

Chords: C G D C G D G

Chords: C G D Am C/D G

Dance: Emigration
Chesapeak Bay

Neil Stuart

♩=120

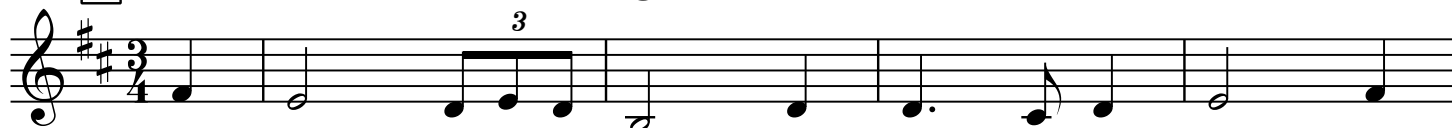
A

1 Em

G

D

A



5

Em

G

Bm



9

Em

G

D

A



13

Em

G

D

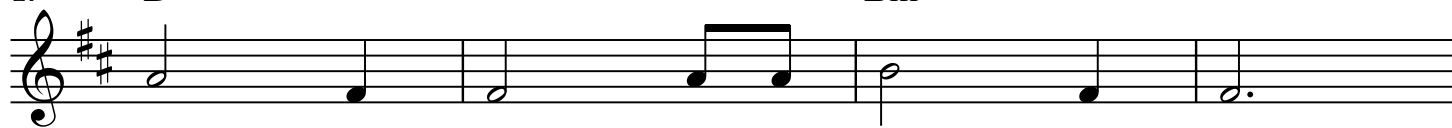


17

B

D

Bm



21

D

A



25

E

G

D

A



29

Em

G


D



TWO PAGES!!!

27/1/26 Symmetry

6 1. G Bm 2. G D



12 Bm

Musical notation for measure 12, key of D major (two sharps), 4/4 time. The melody consists of eighth and quarter notes. The bass line has whole notes.

16 D A

The musical notation for measures 16-19 is shown on a single staff. Measure 16 starts with a treble clef and a key signature of two sharps (F# and C#). The notes are D4 (quarter), E4-F#4 (beamed eighth notes), G4-A4 (beamed eighth notes), B4 (quarter), and C#5 (quarter). Measure 17 contains D4 (quarter), E4 (quarter), F#4 (quarter), G4 (quarter), and A4 (quarter). Measure 18 contains B4 (quarter), C#5 (quarter), D5 (quarter), C#5 (quarter), and B4 (quarter). Measure 19 contains A4 (quarter), G4 (quarter), F#4 (quarter), E4 (quarter), and D4 (quarter). The notes D and A are written above the staff at the beginning of measures 16 and 18, respectively.

20 Em G D A



27/1/26 Symmetry

Slater's Fancy
Walsh 1710



27/1/26 Symmetry

Haste to the Wedding

1 D A D Em A

6 D A D A 1. D 2. D

11 D G D Em A

15 D A D D A 1. D 2. D

The Sword Dance
Walsh 1709

1 Gm D Gm D

5 Gm F Gm

8 1. Dm 2. Dm

27/1/26 Symmetry

BPM=132

Atossa's Gift

5X

FLUTE

1 F Dm

5 F Am⁷ C

9 F Dm

13 F Am⁷ Dm C

17 F C/E Dm C Dm F/C F/A B^b

21 Dm F Am Dm C

25 F C/E Dm C Dm F/C F/A B^b

29 Dm F Am Dm

Atlanta Jan21

Tunbridge Beauties
 Young 1710
 Dance: Peover Hall by Neil Stuart

1 Gm F Bb Cm D

5 Gm F Eb D⁷ Gm

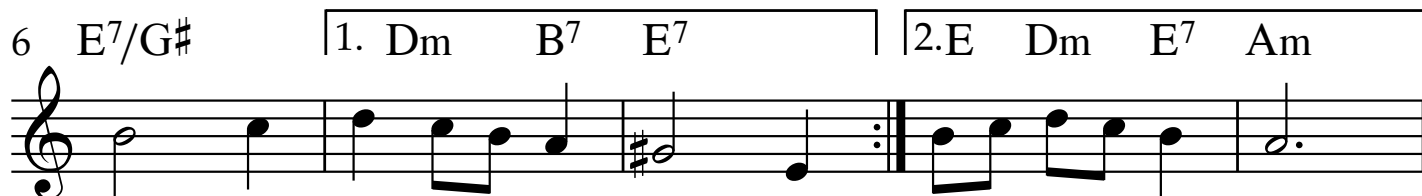
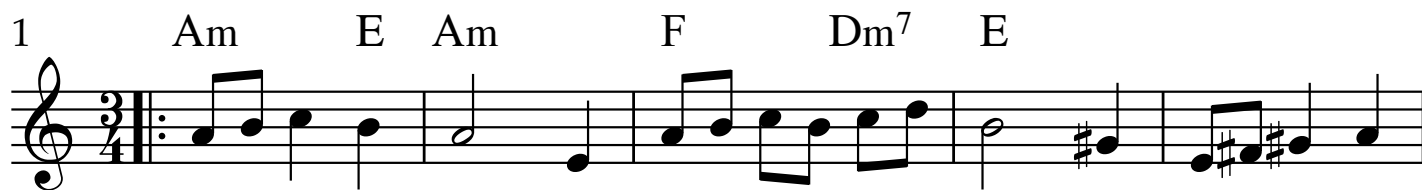
9 Bb Cm F

13 Gm A^o Cm D Gm D Gm

27/1/26 Symmetry

The Bunch
Alt for Tuzzimuzzy

Jonny Dyer



13/9/25 JAF Hunsford Sally