

Merrily We Roll Along

Two staves of musical notation for the piece 'Merrily We Roll Along'. The first staff begins with a treble clef, a key signature of one sharp (F#), and a 4/4 time signature. The melody consists of quarter and eighth notes. The second staff continues the melody and ends with a double bar line.

March of the Daffodils

A Round

Two staves of musical notation for the piece 'March of the Daffodils'. Both staves begin with a treble clef and a key signature of one sharp (F#). The first staff has a 4/4 time signature and includes repeat signs at the beginning and end. The melody is composed of quarter and eighth notes. The second staff continues the melody and also includes repeat signs.

Fallen Apples

Four staves of musical notation for the piece 'Fallen Apples'. The first staff begins with a treble clef, a key signature of one sharp (F#), and a 4/4 time signature. The melody is written in quarter and eighth notes. The second and third staves continue the melody. The fourth staff concludes the piece with a double bar line.

Go Tell Aunt Rody

Musical notation for the song 'Go Tell Aunt Rody'. It consists of two staves of music in 4/4 time with a key signature of one sharp (F#). The melody is written in treble clef. The first staff contains the first four measures, and the second staff contains the remaining four measures, ending with a double bar line.

Hot Cross Buns

Musical notation for the song 'Hot Cross Buns'. It consists of one staff of music in 4/4 time with a key signature of one sharp (F#). The melody is written in treble clef. The piece features a mix of quarter and eighth notes, including a triplet of eighth notes in the third measure. It ends with a double bar line.

C-saw

Musical notation for the song 'C-saw'. It consists of two staves of music in 4/4 time. The key signature is natural (no sharps or flats). The melody is written in treble clef. The first staff contains the first four measures, and the second staff contains the remaining four measures, ending with a double bar line.

Hopping

Musical notation for the song 'Hopping'. It consists of two staves of music in 4/4 time. The key signature is natural (no sharps or flats). The melody is written in treble clef. The piece features a mix of quarter and eighth notes, including a triplet of eighth notes in the third measure of the first staff. It ends with a double bar line.

Au Claire de la Lune

Musical notation for 'Au Claire de la Lune' in 4/4 time. The piece consists of four staves of music. The first staff begins with a treble clef and a 4/4 time signature. The melody is written in a simple, stepwise fashion, using quarter and half notes. The second and third staves continue the melody with similar rhythmic patterns. The fourth staff concludes the piece with a double bar line.

London Bridge is Falling Down

Musical notation for 'London Bridge is Falling Down' in 4/4 time. The piece consists of two staves of music. The first staff begins with a treble clef and a 4/4 time signature. The melody is written in a simple, stepwise fashion, using quarter and half notes. The second staff continues the melody and concludes with a double bar line.

Happy Perry the Partridge

Musical notation for 'Happy Perry the Partridge' in 4/4 time. The piece consists of two staves of music. The first staff begins with a treble clef, a 4/4 time signature, and a repeat sign. The melody is written in a simple, stepwise fashion, using quarter and half notes, with some accidentals (sharps). The second staff continues the melody and concludes with a double bar line.

Femtiöringen

Musical notation for 'Femtiöringen' in 3/4 time, consisting of four staves of music. The first staff begins with a treble clef, a 3/4 time signature, and a repeat sign. The melody consists of quarter and eighth notes. The second and fourth staves end with repeat signs and a double bar line.

ABCs

Musical notation for 'ABCs' in 4/4 time, consisting of two staves of music. The first staff begins with a treble clef and a 4/4 time signature. The melody is composed of quarter notes. The second staff ends with a double bar line.

CDs

Musical notation for 'CDs' in 4/4 time, consisting of two staves of music. The first staff begins with a treble clef and a 4/4 time signature. The melody is composed of quarter notes. The second staff ends with a double bar line.

Jumping Beans

Two staves of musical notation for 'Jumping Beans' in 4/4 time. The first staff contains the first four measures, and the second staff contains the next four measures. The melody consists of eighth and quarter notes.

Jumping Peas

Two staves of musical notation for 'Jumping Peas' in 4/4 time. The first staff contains the first four measures, and the second staff contains the next four measures. The melody consists of eighth and quarter notes.

DAA

Two staves of musical notation for 'DAA' in 3/4 time. The first staff contains the first four measures, and the second staff contains the next four measures. The melody consists of quarter and eighth notes.

London's Burning

Two staves of musical notation for 'London's Burning' in 3/4 time. The first staff contains the first four measures, and the second staff contains the next four measures. The melody consists of quarter and eighth notes.

Ode to Joy

Musical score for "Ode to Joy" in 4/4 time, consisting of four staves of music. The melody is written in treble clef. The first staff begins with a treble clef and a 4/4 time signature. The melody consists of a sequence of eighth and quarter notes, with a dotted quarter note in the fourth measure of the first staff. The second staff continues the melody with a quarter rest in the fourth measure. The third and fourth staves complete the piece with a double bar line at the end of the fourth staff.

Sticky G

Musical score for "Sticky G" in 3/4 time, consisting of four staves of music. The melody is written in treble clef. The first staff begins with a treble clef and a 3/4 time signature. The melody consists of a sequence of quarter and eighth notes, with a dotted quarter note in the fourth measure. The second and third staves continue the melody with a quarter rest in the fourth measure. The fourth staff completes the piece with a double bar line at the end of the fourth staff.

The Cuckoo

Stop!

Back to the start
Stop at Stop!

Miss Mack

Shepherds Hey

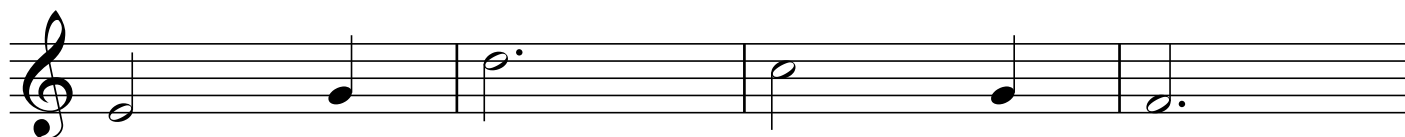
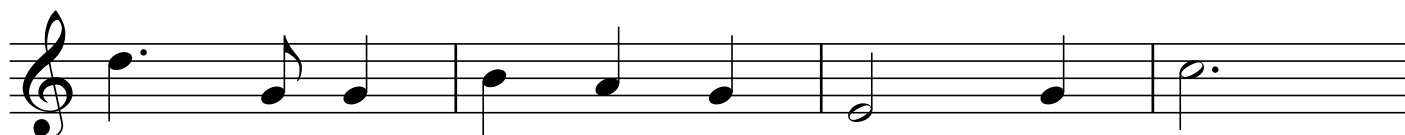
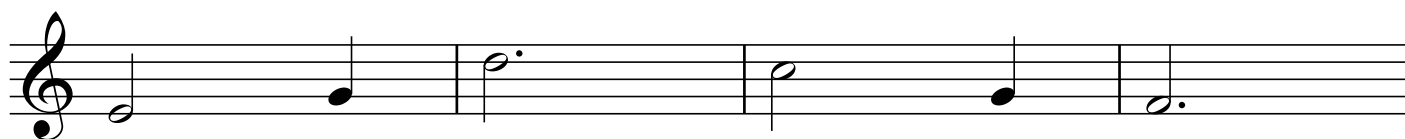
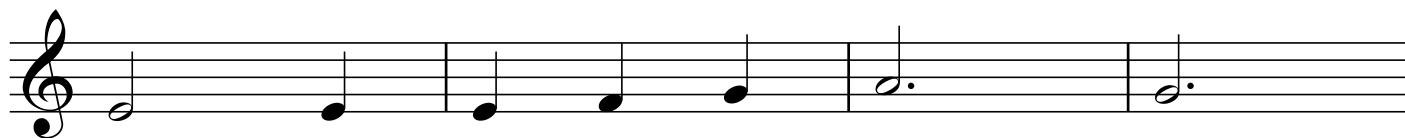
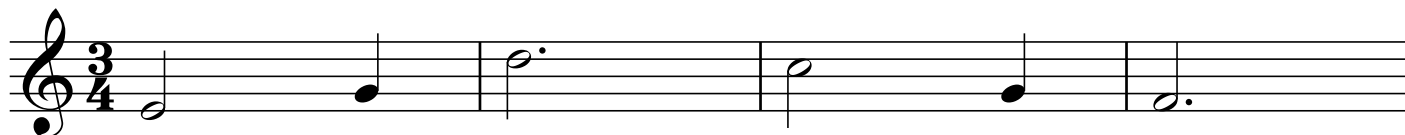
The Shoemaker

The musical notation for 'The Shoemaker' is written in 4/4 time and consists of three staves. The first staff begins with a treble clef, a 4/4 time signature, and a repeat sign. The melody is composed of eighth and quarter notes, with some beamed eighth notes. The second staff continues the melody with similar rhythmic patterns. The third staff concludes the piece with a final note and a repeat sign.

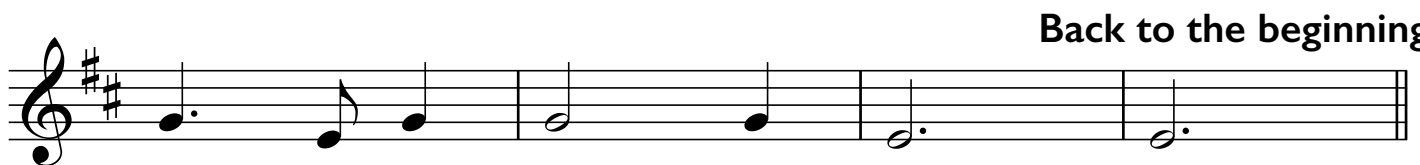
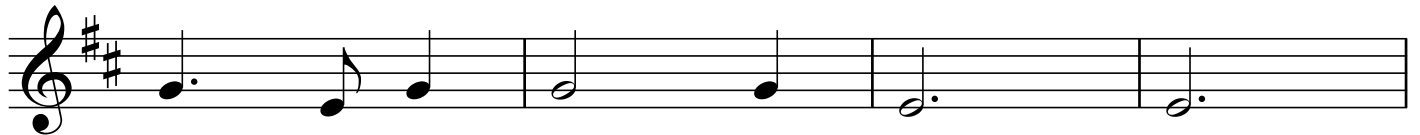
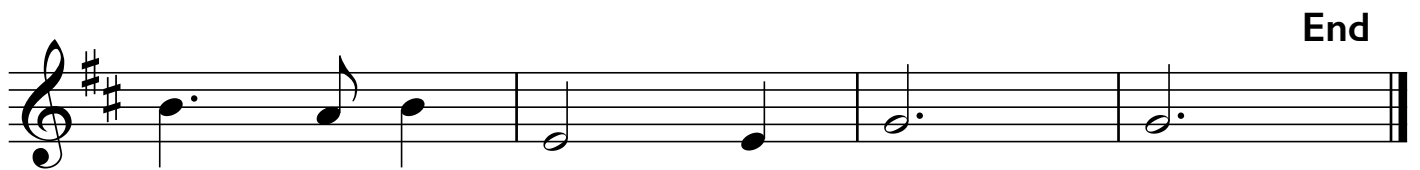
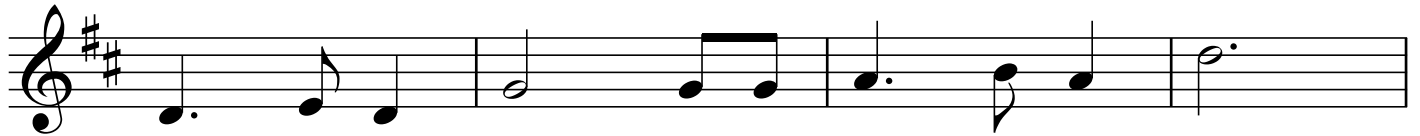
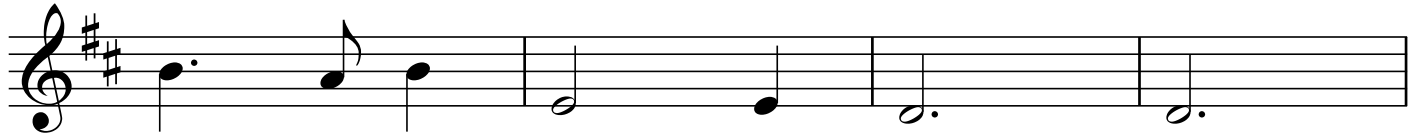
Flagpole Tree

The musical notation for 'Flagpole Tree' is written in 4/4 time and consists of four staves. The first staff begins with a treble clef, a 4/4 time signature, and a repeat sign. The melody features a prominent F# note and is primarily composed of eighth and quarter notes. The second staff continues the melody. The third staff shows a change in the melodic line, still featuring the F# note. The fourth staff concludes the piece with a final note and a repeat sign.

Edelweiss



The Skye Boat Song



Katie's Waltz



Musical score for 'Katie's Waltz' in G major (one sharp) and 3/4 time. The score consists of four staves of music. The first staff begins with a repeat sign and a first ending bracket. The second and fourth staves end with repeat signs and double bar lines. The melody is simple and characteristic of a waltz.

Auld Lang Syne



Musical score for 'Auld Lang Syne' in G major (one sharp) and 4/4 time. The score consists of four staves of music. The melody is a well-known Scottish folk tune. The score uses a variety of note values including quarter, eighth, and sixteenth notes, along with rests.

Goddesses

Playford

Musical score for 'Goddesses' by Playford, in 4/4 time. The score consists of four staves of music. The first staff begins with a treble clef, a key signature of one flat (B-flat), and a 4/4 time signature. The melody is composed of eighth and quarter notes, with a final half note. The second staff continues the melody with similar rhythmic patterns. The third and fourth staves feature a more complex rhythmic pattern with dotted notes and eighth notes, ending with a double bar line.

Menuet

Bach

Musical score for 'Menuet' by Bach, in 3/4 time. The score consists of four staves of music. The first staff begins with a treble clef, a key signature of two sharps (D major), and a 3/4 time signature. The melody is composed of quarter and eighth notes, with many notes beamed together. The second and third staves continue the melody with similar rhythmic patterns. The fourth staff concludes the piece with a double bar line.

The Archer from The Huntsman's Chorus by Weber

I

1.

2.

1.

2.