

Session 14: World Nyckelharpa Day '22

Hawaiian Contra

Jonny Dyer

0



5

10

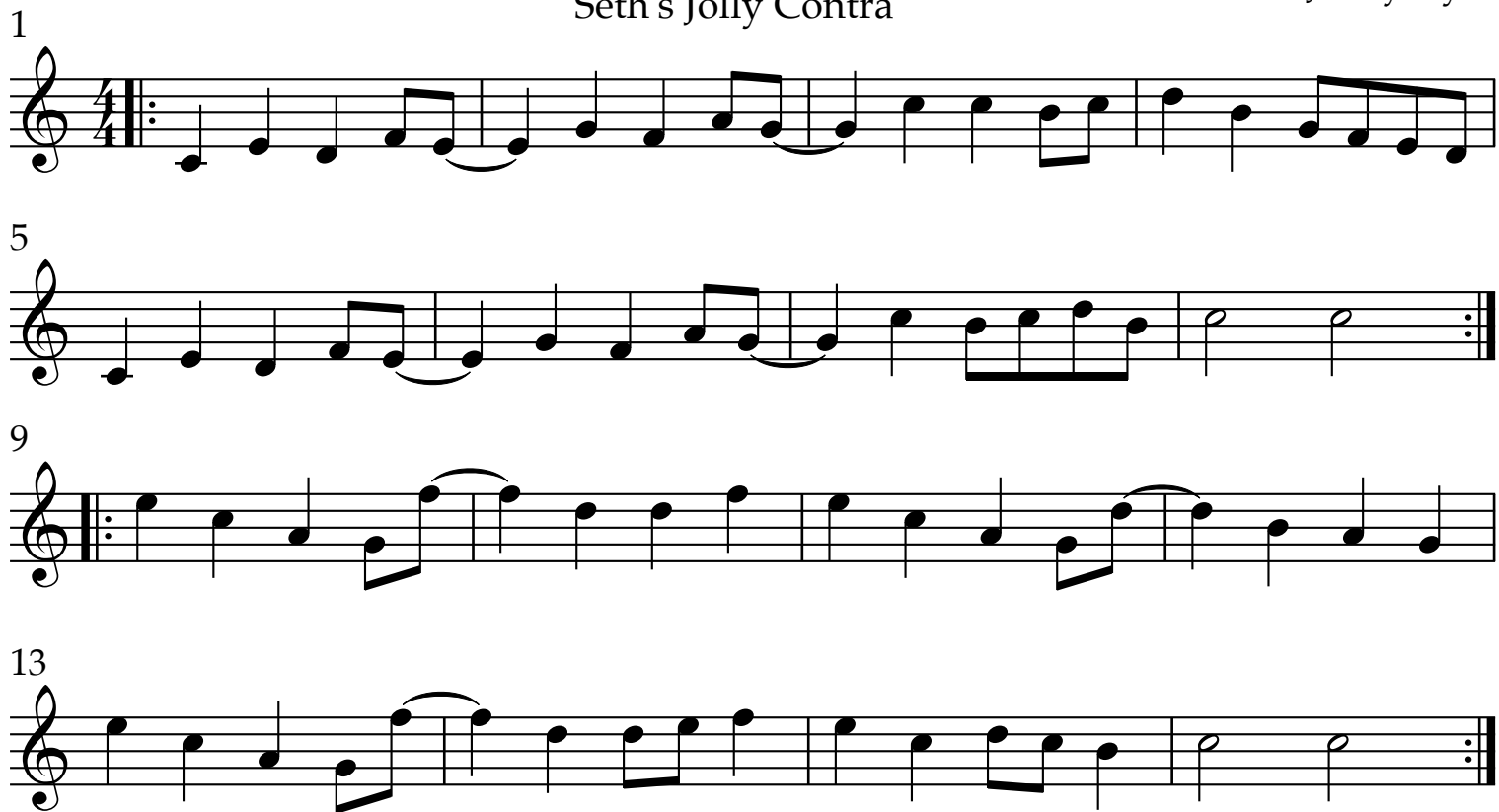
14

Detailed description: This section contains four staves of musical notation for the Hawaiian Contra piece. The first staff (measures 0-4) starts with a treble clef, a 4/4 time signature, and a key signature of one flat. It features a sequence of eighth and quarter notes, with a repeat sign at the end. The second staff (measures 5-13) includes a first ending bracket over measures 10-12 and a second ending bracket over measures 12-13. The third staff (measures 14-17) continues the melody with eighth and quarter notes. The fourth staff (measures 18-21) also includes a first ending bracket over measures 19-20 and a second ending bracket over measures 20-21. Fingering numbers (0, 5, 10, 14) are placed above the first four staves.

Seth's Jolly Contra

Jonny Dyer

1



5

9

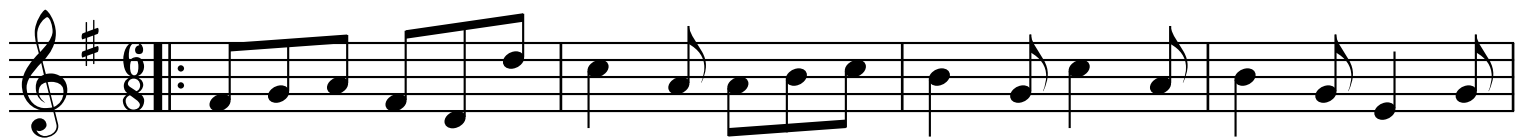
13

Detailed description: This section contains four staves of musical notation for the Seth's Jolly Contra piece. The first staff (measures 1-4) starts with a treble clef, a 4/4 time signature, and a key signature of one flat. It features a sequence of eighth and quarter notes. The second staff (measures 5-8) continues the melody with eighth and quarter notes. The third staff (measures 9-12) includes a repeat sign at the beginning and continues with eighth and quarter notes. The fourth staff (measures 13-16) concludes the piece with a final cadence. Fingering numbers (1, 5, 9, 13) are placed above the first four staves.

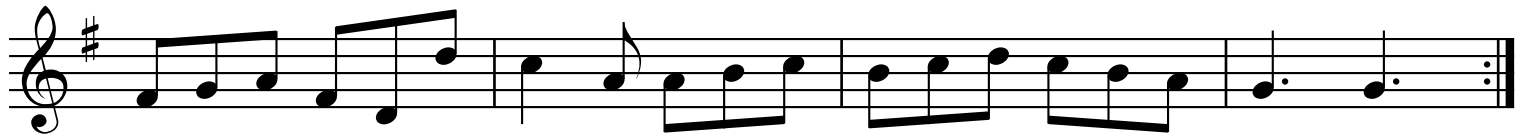
Incognito Ian

Jonny Dyer

1



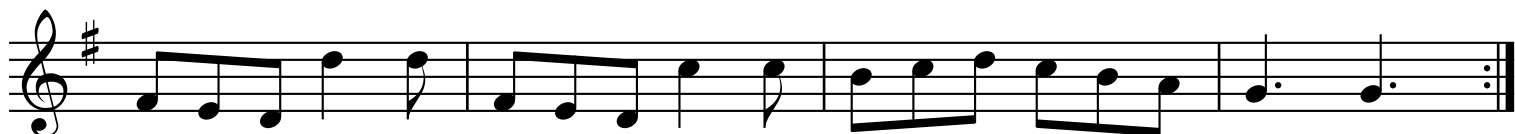
5



9



13



JoLaine's Jig

Jonny Dyer

1



5



9



13



Italian Pants

Jonny Dyer

1

Musical staff 1 for 'Italian Pants'. It begins with a treble clef, a key signature of one flat (B-flat), and a 4/4 time signature. The melody starts with a repeat sign and consists of eighth and quarter notes.

5

Musical staff 2 for 'Italian Pants'. It continues the melody from staff 1. At the end of the staff, there are two first endings: '1.' and '2.', each enclosed in a box and separated by a bar line.

10

Musical staff 3 for 'Italian Pants'. It continues the melody from staff 2. It begins with a repeat sign.

14

Musical staff 4 for 'Italian Pants'. It continues the melody from staff 3. At the end of the staff, there are two first endings: '1.' and '2.', each enclosed in a box and separated by a bar line.

Dot Dot Dot

Jonny Dyer

1

Musical staff 1 for 'Dot Dot Dot'. It begins with a treble clef, a key signature of one sharp (F#), and a 4/4 time signature. The melody starts with a repeat sign and consists of quarter and eighth notes.

5

Musical staff 2 for 'Dot Dot Dot'. It continues the melody from staff 1. At the end of the staff, there are two first endings: '1.' and '2.', each enclosed in a box and separated by a bar line.

10

Musical staff 3 for 'Dot Dot Dot'. It continues the melody from staff 2. It begins with a repeat sign.

14

Musical staff 4 for 'Dot Dot Dot'. It continues the melody from staff 3. At the end of the staff, there are two first endings: '1.' and '2.', each enclosed in a box and separated by a bar line.

Vintage Puget

Vicki Swan

1



5



9



13



17



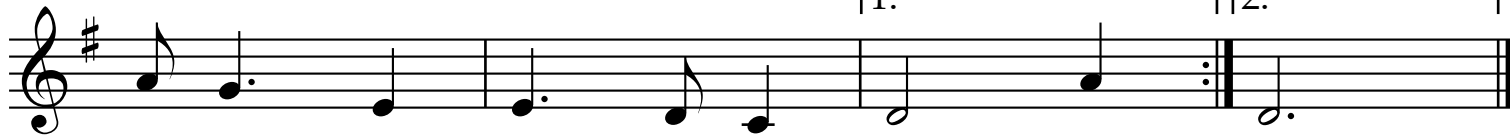
21



25



30



Hyde and Seek

Vicki Swan

1

Musical staff 1 for 'Hyde and Seek'. It begins with a treble clef, a key signature of two flats (B-flat and E-flat), and a 6/8 time signature. The staff contains a sequence of eighth and quarter notes, starting with a repeat sign.

5

Musical staff 2 for 'Hyde and Seek', continuing the melody from staff 1.

9

Musical staff 3 for 'Hyde and Seek', continuing the melody from staff 2.

13

Musical staff 4 for 'Hyde and Seek', concluding the piece with a repeat sign.

The Japonica Jig

Vicki Swan

1

Musical staff 1 for 'The Japonica Jig'. It begins with a treble clef, a key signature of two flats (B-flat and E-flat), and a 6/8 time signature. The staff contains a sequence of eighth and quarter notes, starting with a repeat sign.

5

Musical staff 2 for 'The Japonica Jig', continuing the melody from staff 1.

9

Musical staff 3 for 'The Japonica Jig', continuing the melody from staff 2.

13

Musical staff 4 for 'The Japonica Jig', concluding the piece with a repeat sign.

Hands Across the Pond

Jonny Dyer

6



12



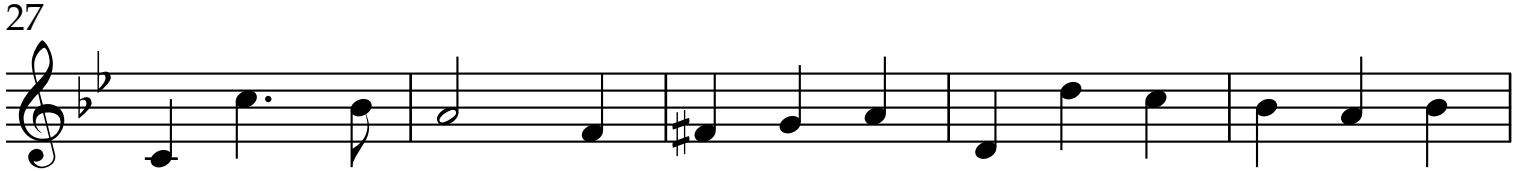
17



22



27



32



38



43

